

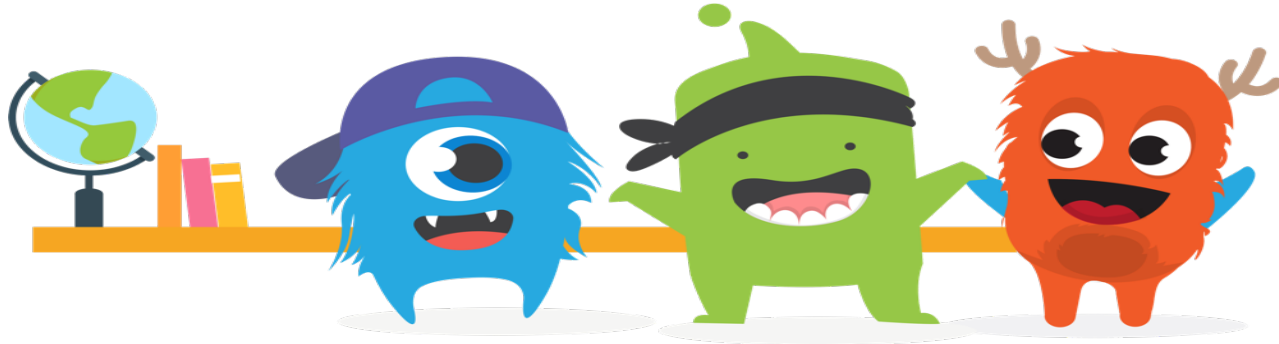


Parent Portal  
Training

North Grade K8  
School

# Let's create an amazing Schoolwide Classdojo community

<https://www.youtube.com/watch?v=3eG8wAlgWw8>



Classdojo is a powerful parent communication tool. That will help us engage with our parents in their home language

Classdojo has many resources for student engagement, staff engagement, behavior management and SEL lessons

# How parents connect to ClassDojo :)



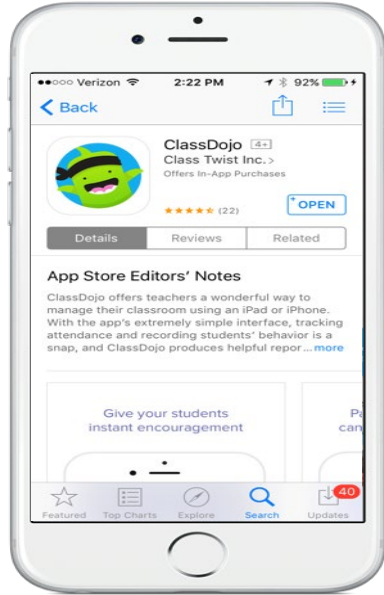
**Teacher will:**

Invite parents to join their students classroom.

Parents accept invitation.

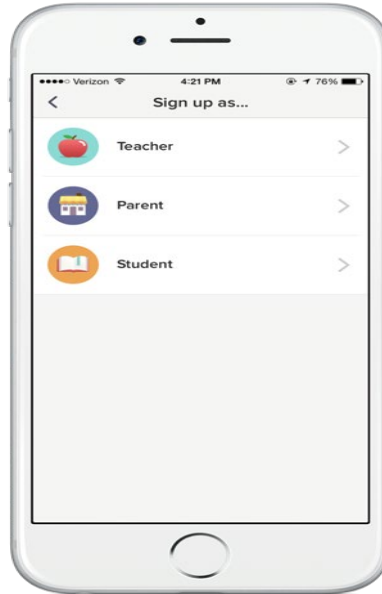
# How do parents get connected!

3 easy steps

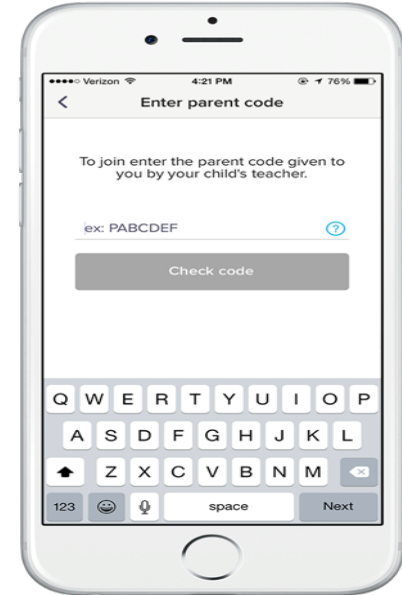


1. Download the  
app

iOS, Android, Kindle Fire



2. Sign up as a parent



3. Enter your code!

# Class Dojo How to Videos

What Families See (in the ClassDojo app)

<https://www.youtube.com/watch?v=ubxQhNXssy8>

Parent Communication with Class Dojo

[https://www.youtube.com/watch?v=nQdkT\\_0Ddz0](https://www.youtube.com/watch?v=nQdkT_0Ddz0)



# SIS Gateway

[SIS Gateway](#)

# How to create Gmail Account

[https://www.youtube.com/watch?v=kKxDZGNA\\_so&t=17s](https://www.youtube.com/watch?v=kKxDZGNA_so&t=17s)

# Report Card Levels

**EX** - Exceeds grade level/Supera el nivel de grado

**PR** - Proficient - On grade level/ A nivel de grado

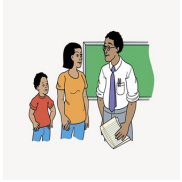
**AP** - Approaching level/Acercándose al nivel de grado

**ND** - Needs Development/Desarrollo de necesidades





# Other ways to get information



Request a conference



Email



Phone 561 202 - 9300